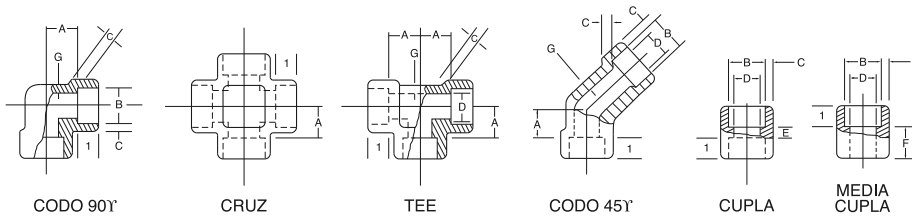
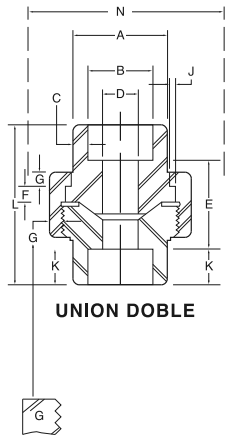


# ACCESORIOS FORJADOS DE ACERO INOXIDABLE PARA SOLDAR A ENCHUFE ASTM A-182



## SERIE 3000/6000/9000 LBS. • ANSI B16.11

DIAMETRO NOMINAL	DIAMETRO DEL ENCHUFE D <sub>dia.</sub> (2)			ESPESOR DE PARED DEL ENCHUFE (1) C						ESPESOR DE PARED DEL ACCESORIO (G)			PROFUNDIDAD DEL ENCHUFE (Min.) (J)	CENTRO AL TOPE DEL ENCHUFE (A)						DISTANCIA ENTRE TOPE		
	DIAMETRO INTERIOR DEL ACCESORIO (2) D			SERIE/LBS						SERIE/LBS				CODO 90° TEE Y CRUZ			CODO 45°			CUPLA (E)	MEDIA CUPLA (F)	
	SERIE/LBS			3000		6000		9000		3000	6000	9000		SERIE/LBS			SERIE/LBS					
	3000	6000	9000	PROM.	MIN.	PROM.	MIN.	PROM.	MIN.	MIN.	MIN.	MIN.		3000	6000	9000	3000	6000	9000			
1/8	10.90	7.6	4.8	3.2	3.2	3.95	3.45			2.4	3.15		10	12	12		9	9		8	17	
	10.65	6.1	3.2											10	10		7	7		5	15	
1/4	14.35	10.0	7.1	3.8	3.3	4.6	4			3	3.7		10	12	17		9	9		8	17	
	14.10	8.5	5.6											10	13		7	7		5	15	
3/8	17.80	13.3	9.9	4	3.5	5.05	4.35			3.2	4		10	15	17		9	13		9	19	
	17.55	11.8	8.4											12	14		6	10		3	16	
1/2	21.95	16.6	12.5	7.2	4.65	4.1	5.95	5.2	9.35	8.2	3.75	4.8	7.45	10	17	21	27	13	14	17	13	24
	21.70	15.0	11.0	5.6											14	18	24	10	11	14	6	21
3/4	27.30	21.7	16.3	11.8	4.9	4.25	6.95	6.05	9.8	8.55	3.9	5.55	7.8	13	21	24	30	14	16	21	13	25
	27.05	20.2	14.8	10.3											18	21	27	11	13	17	6	22
1	34.05	27.4	21.5	16.0	5.7	5	7.9	6.95	11.4	9.95	4.55	6.35	9.1	13	24	29	34	16	19	23	17	31
	33.80	25.9	19.9	14.5											20	25	30	12	16	19	9	27
1 1/4	42.80	35.8	30.2	23.5	6.05	5.3	7.9	6.95	12.5	10.6	4.85	6.35	9.7	13	29	34	37	19	23	24	17	32
	42.55	34.3	28.7	22.0											25	30	33	16	19	20	9	28
1 1/2	48.90	41.7	34.7	28.7	6.35	5.55	8.9	7.8	12.7	11.15	5.1	7.15	10.15	13	34	40	40	23	27	28	17	34
	48.65	40.1	33.2	27.2											30	36	36	19	23	23	9	30
2	61.35	53.5	43.6	38.9	6.95	6.05	10.9	9.5	13.85	12.15	5.55	8.75	11.05	16	40	43	56	27	31	31	23	43
	61.10	51.7	42.1	37.4											36	39	52	23	27	26	15	39



UNION DOBLE

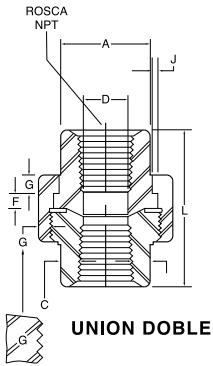
## ANSI B16.11

DIAM. NOMINAL	A (MIN.)	B	C (MIN.)	D	E	F (MIN.)	G	J (MIN.)	K (MIN.)	L	N
1/8	21.8	10.92	3.17	6.83	22.4	3.17	3.17	1.24	9.6	41.4	49
		10.67		6.43	19.0						
1/4	21.8	14.22	3.3	9.85	22.4	3.17	3.17	1.24	9.6	41.4	49
		13.97		9.45	19.0						
3/8	25.9	17.78	3.48	13.92	26.9	3.43	3.43	1.37	9.6	46	55
		17.53		13.51	20.6						
1/2	31.2	21.84	4.06	17.47	26.9	3.68	3.68	1.5	9.6	49	57
		21.59		17.07	20.6						
3/4	37.1	27.18	4.27	21.79	31.8	4.06	4.06	1.68	12.7	56.9	67
		26.92		21.39	25.4						
1	45.5	34.04	4.95	28.14	34.3	4.57	4.44	1.85	12.7	62	79
		33.78		27.74	26.2						
1 1/4	54.9	42.67	5.28	35.76	40.6	5.33	5.21	2.13	12.7	71.1	94
		42.42		35.36	32.5						
1 1/2	61.5	48.77	5.54	41.61	42.2	5.84	5.59	2.31	12.7	76.5	111
		48.51		41.20	34.0						
2	75.2	61.47	6.05	52.53	45.5	6.6	6.35	2.69	15.8	86.1	132
		61.21		52.12	37.3						

Todas las dimensiones expresadas en mm.

- 1) El espesor de pared promedio del enchufe no debe ser inferior al indicado. Los espesores mínimos están permitidos sólo en áreas localizadas.  
2) Los valores superiores e inferiores indicados para cada diámetro son los máximos y mínimos respectivamente.

# ACCESORIOS FORJADOS DE ACERO INOXIDABLE PARA ROSCAR ASTM A-182



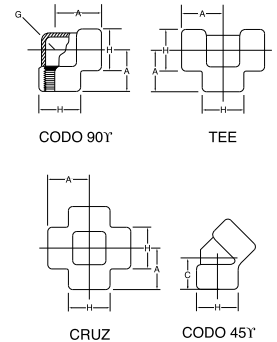
UNION DOBLE

ANSI B16.11

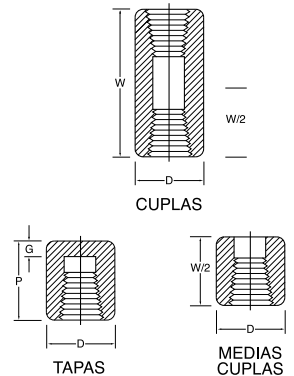
DIAM. NOMINAL	A (MIN.)	C (MIN.)	D	F (MIN.)	G	J (MIN.)	L	N
1/8	14.7	2.41	6.83 6.43	3.17	3.2	1.24	41.4	49
1/4	19	3.02	9.85 9.45	3.17	3.2	1.24	41.4	49
3/8	22.9	3.2	13.92 13.51	3.43	3.4	1.37	46	55
1/2	27.7	3.73	17.47 17.07	3.68	3.7	1.5	49	57
3/4	33.5	3.91	21.79 21.39	4.06	4.1	1.68	56.9	67
1	41.4	4.55	28.14 27.74	4.57	4.4	1.85	62	79
1 1/4	50.5	4.85	35.76 35.36	5.33	5.2	2.13	71.1	94
1 1/2	57.2	5.08	41.61 41.20	5.84	5.6	2.31	76.4	111
2	70.1	5.54	52.53 52.12	6.6	6.4	2.69	86.1	132

Los valores superiores e inferiores indicados para cada diámetro son los máximos y mínimos respectivamente.

DIAMETRO NOMINAL	CODO 90° (A)		CODO 45° (C)		(H)		(G) MIN.	
	3000	6000	3000	6000	3000	6000	3000	6000
1/8	21	25	17	19	22	25	3	6.5
1/4	25	29	19	22	25	33	3.5	6.5
3/8	29	33	22	25	33	38	3.5	7
1/2	33	38	25	29	38	46	4	8
3/4	38	44	29	33	46	56	4.5	8.5
1	44	51	33	35	56	62	5	10
1 1/4	51	60	35	43	62	75	5.5	10.5
1 1/2	60	64	43	44	75	84	5.5	11
2	64	83	45	52	84	102	7	12



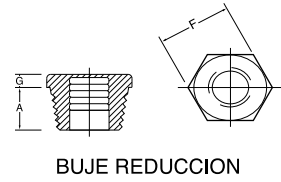
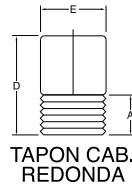
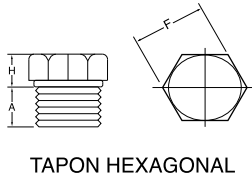
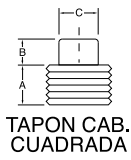
DIAMETRO NOMINAL	CUPLA (W)	TAPA (P)		(D)		(G) MIN.	
	3000 Y 6000	3000	6000	3000	6000	3000	6000
1/8	32	19		16	22	5.0	
1/4	35	25	27	19	25	5.0	6.5
3/8	38	25	27	22	32	5.0	6.5
1/2	48	32	33	29	38	6.5	8.0
3/4	51	37	38	35	44	6.5	8.0
1	60	41	43	44	57	9.5	11.0
1 1/4	67	44	46	57	64	9.5	11.0
1 1/2	79	44	48	64	76	11.0	12.5
2	86	48	51	76	92	12.5	16.0



SERIE 3000/6000 LBS.  
ANSI B16.11

Todas las dimensiones expresadas en mm.  
Largo de las roscas según ANSI B2.1

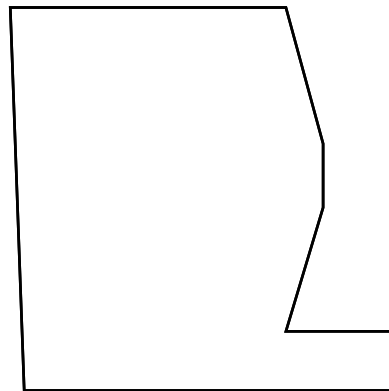
# ACCESORIOS FORJADOS DE ACERO INOXIDABLE PARA ROSCAR ASTM A-182



## ANSI B16.11

DIAMETRO NOMINAL	A (MIN.)	TAPON CABEZA CUADRADA		TAPON CABEZA REDONDA		TAPON CABEZA HEXAGONAL Y BUJE REDUCCION		
		B (MIN.)	C (MIN.)	E	D (MIN.)	F	ALTURA HEXAGONO (MIN.)	
							BUJE G	TAPON H
1/8	9.5	6	7	10	35	11		6
1/4	11	6	9.5	13	41	16	3	6
3/8	12.5	8	11	17	41	17.5	4	8
1/2	14.5	10	14.5	21	44	22	5	8
3/4	16	11	16	27	44	27	6	10
1	19	13	20.5	33	51	35	6	10
1 1/4	20.5	14	24	43	51	44.5	7	14
1 1/2	20.5	16	28.5	48	51	51	8	16
2	22	17	33.5	60	64	63.5	9	17

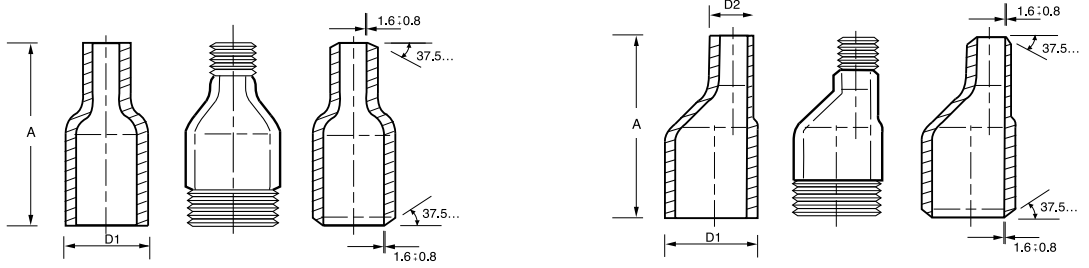
DIAMETRO NOMINAL	A
	ENTRERROSCAS
1/4	39
3/8	42
1/2	46
3/4	53
1	55
1 1/4	59
1 1/2	63
2	76



ANSI B16.11

Todas las dimensiones expresadas en mm

# NIPLES DE REDUCCION DE ACERO INOXIDABLE ASTM A-182



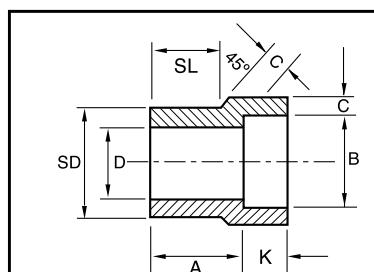
## MSS-SP 95

Diámetro Nominal en Pulgadas	DIAMETRO EXTERIOR		LARGO "A"
	MAYOR D1	MENOR D2	
1/4 x 1/8	13.7	10.3	57
3/8 x 1/8	17.1	10.3	64
3/8 x 1/4	17.1	13.7	64
1/2 x 1/8	21.3	10.3	70
1/2 x 1/4	21.3	13.7	70
1/2 x 3/8	21.3	17.1	70
3/4 x 1/8	26.7	10.3	76
3/4 x 1/4	26.7	13.7	76
3/4 x 3/8	26.7	17.1	76
3/4 x 1/2	26.7	21.3	76
1 x 1/8	33.4	10.3	89
1 x 1/4	33.4	13.7	89
1 x 3/8	33.4	17.1	89
1 x 1/2	33.4	21.3	89
1 x 3/4	33.4	26.7	89
1-1/4 x 1/8	42.2	10.3	102
1-1/4 x 1/4	42.2	13.7	102
1-1/4 x 3/8	42.2	17.1	102

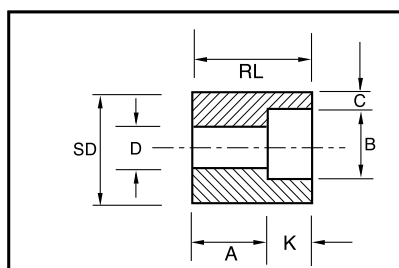
Diámetro Nominal en Pulgadas	DIAMETRO EXTERIOR		LARGO "A"
	MAYOR D1	MENOR D2	
1-1/4 x 1/2	42.2	21.3	102
1-1/4 x 3/4	42.2	26.7	102
1-1/4 x 1	42.2	33.4	102
1-1/2 x 1/8	48.3	10.3	114
1-1/2 x 1/4	48.3	13.7	114
1-1/2 x 3/8	48.3	17.1	114
1-1/2 x 1/2	48.3	21.3	114
1-1/2 x 3/4	48.3	26.7	114
1-1/2 x 1	48.3	33.4	114
1-1/2 x 1-1/4	48.3	42.2	114
2 x 1/8	60.3	10.3	165
2 x 1/4	60.3	13.7	165
2 x 3/8	60.3	17.1	165
2 x 1/2	60.3	21.3	165
2 x 3/4	60.3	26.7	165
2 x 1	60.3	33.4	165
2 x 1-1/4	60.3	42.2	165
2 x 1-1/2	60.3	48.3	165

Todas las dimensiones expresadas en mm

# INSERTOS DE REDUCCION DE ACERO INOXIDABLE ASTM A-182



TIPO 1



TIPO 2

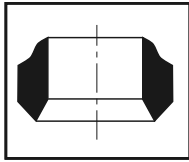
## MSS-SP 79

DIAMETRO NOMINAL EN PULGADAS	TIPO		ENCHUFE		DIA SD	LARGO (A)		DIAMETRO (D)		ESPESOR PARED (MIN) (C)		Dimensiones en mm.			
			DIAM (B)	PROFU MIN (K)		3000	6000	3000	6000	3000	6000	LARGO			
	3000	6000										3000	6000	3000	6000
3/8 x 1/4	1	1	14.35	10	17.15	19	21	9.0	6.5	3.78	4.60	14	16	-	-
1/2 x 3/8	1	1	17.78	10	21.34	21	23	12.5	9.0	4.01	5.03	16	16	-	-
1/2 x 1/4	1	1	14.35	10	21.34	21	21	9.0	6.5	3.78	4.60	16	16	-	-
3/4 x 1/2	1	1	21.97	10	26.67	22	25	16.0	11.5	4.67	5.97	17	19	-	-
3/4 x 3/8	2	1	17.78	10	26.67	16	22	12.5	9.0	4.01	5.03	-	19	27	-
3/4 x 1/4	2	2	14.35	10	26.67	18	22	9.0	6.5	3.78	4.60	-	-	27	32
1 x 3/4	1	1	27.31	13	33.40	24	28	21.0	15.5	4.90	6.96	19	21	-	-
1 x 1/2	2	1	21.97	10	33.40	16	28	16.0	11.5	4.67	5.97	-	21	28	-
1 x 3/8	2	2	17.78	10	33.40	18	22	12.5	9.0	4.01	5.03	-	-	28	33
1 x 1/4	2	2	14.35	10	33.40	19	24	9.0	6.5	3.78	4.60	-	-	28	33
1-1/4 x 1	1	1	34.04	13	42.16	25	30	26.5	20.5	5.69	7.92	21	22	-	-
1-1/4 x 3/4	2	2	27.31	13	42.16	18	21	21.0	15.5	4.90	6.96	-	-	32	35
1-1/4 x 1/2	2	2	21.97	10	42.16	19	22	16.0	11.5	4.67	5.97	-	-	32	35
1-1/4 x 3/8	2	2	17.78	10	42.16	21	24	12.5	9.0	4.01	5.03	-	-	32	35
1-1/4 x 1/4	2	2	14.35	10	42.16	22	25	9.0	6.5	3.78	4.60	-	-	32	35
1-1/2 x 1-1/4	1	1	42.80	13	48.26	28	35	35.0	29.5	6.07	7.92	22	25	-	-
1-1/2 x 1	2	1	34.04	13	48.26	18	29	26.5	20.5	5.69	7.92	-	25	33	-
1-1/2 x 3/4	2	2	27.31	13	48.26	19	25	21.0	15.5	4.90	6.96	-	-	33	40
1-1/2 x 1/2	2	2	21.97	10	48.26	21	27	16.0	11.5	4.67	5.97	-	-	33	40
1-1/2 x 3/8	2	2	17.78	10	48.26	22	28	12.5	9.0	4.01	5.03	-	-	33	40
2 x 1-1/2	1	1	48.90	13	60.32	32	39	41.0	34.0	6.35	8.9	25	28	-	-
2 x 1-1/4	2	2	42.8	13	60.32	21	24	35.0	29.5	6.07	7.92	-	-	38	41
2 x 1	2	2	34.04	13	60.32	22	25	26.5	21.0	5.69	7.92	-	-	38	41
2 x 3/4	2	2	27.31	13	60.32	24	27	21.0	15.5	4.90	6.96	-	-	38	41
2 x 1/2	2	2	21.97	10	60.32	25	28	16.0	11.5	4.67	5.97	-	-	38	41

Todas las dimensiones expresadas en mm

# OUTLETS FORJADOS, DE ACERO INOXIDABLE, ASTM A-182

## WELDOLETS - SERIE 3000

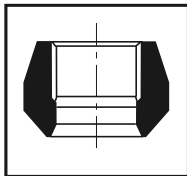


MSS-SP 97

DIAMETRO NOMINAL DEL CAÑO EN PULGADAS	OUT-LET DIAMETRO NOMINAL
36 - 3/8	1/8
3/8	1/4
1/2	3/8
3/4	1/2
1	3/4
1 - 1/4	1
1 - 1/2	1 - 1/4
2	1 - 1/2
2 - 1/2	2
3	2 - 1/2
4	3
6	3 - 1/2

DIAMETRO NOMINAL DEL CAÑO EN PULGADAS	OUT-LET DIAMETRO NOMINAL
36 - 5	4
6	5
8	6
10	8
12	10
14	12
16	14
18	16
20	18
22	20
26	24

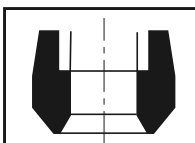
## THREDOLETS - SERIE 3000



MSS-SP 97

DIAMETRO NOMINAL DEL CAÑO EN PULGADAS	OUT-LET DIAMETRO NOMINAL
36 - 3/8	1/8
3/8	1/4
1/2	3/8
3/4	1/2
1	3/4
1 - 1/4	1
1 - 1/2	1 - 1/4
2	1 - 1/2
2 - 1/2	2
3	2 - 1/2
4	3
6	4

## SOCKOLETS - SERIE 3000



MSS-SP 97

DIAMETRO NOMINAL DEL CAÑO EN PULGADAS	OUT-LET DIAMETRO NOMINAL
36 - 3/8	1/8
3/8	1/4
1/2	3/8
3/4	1/2
1	3/4
1 - 1/4	1
1 - 1/2	1 - 1/4
2	1 - 1/2
2 - 1/2	2
3	2 - 1/2
4	3
6	4